

PRODUCT INFORMATION PACKET

Model No: 048S17D2116

Catalog No: B606

Fan and Blower Motor, 0.25 HP, 1 Ph, 60 Hz, 277 V, 1800 RPM, 48Z Frame, DP



Regal and Marathon are trademarks of Regal Rexnord Corporation or one of its affiliated companies.
©2024 Regal Rexnord Corporation, All Rights Reserved. MC017097E



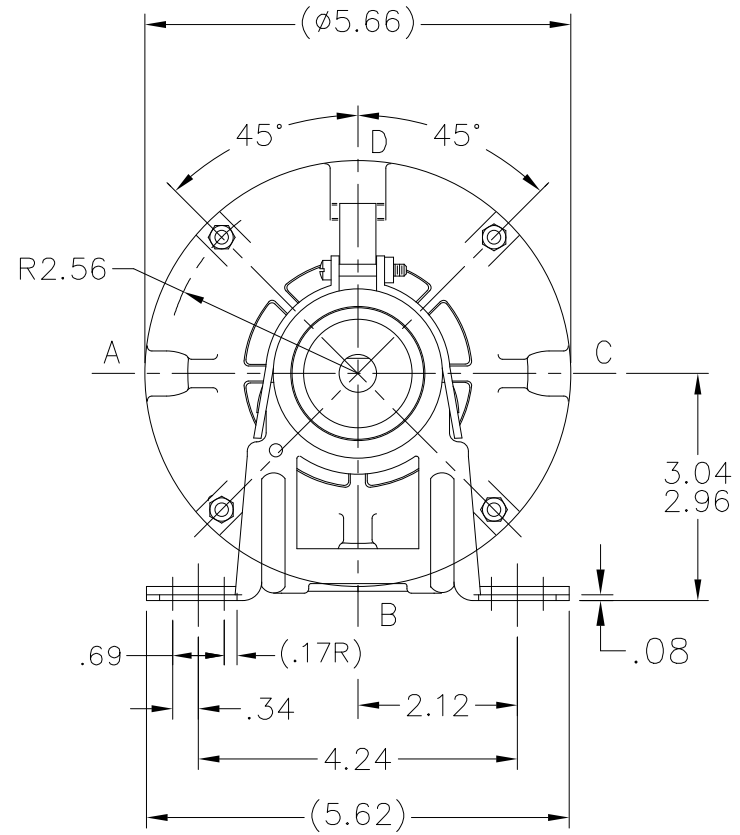
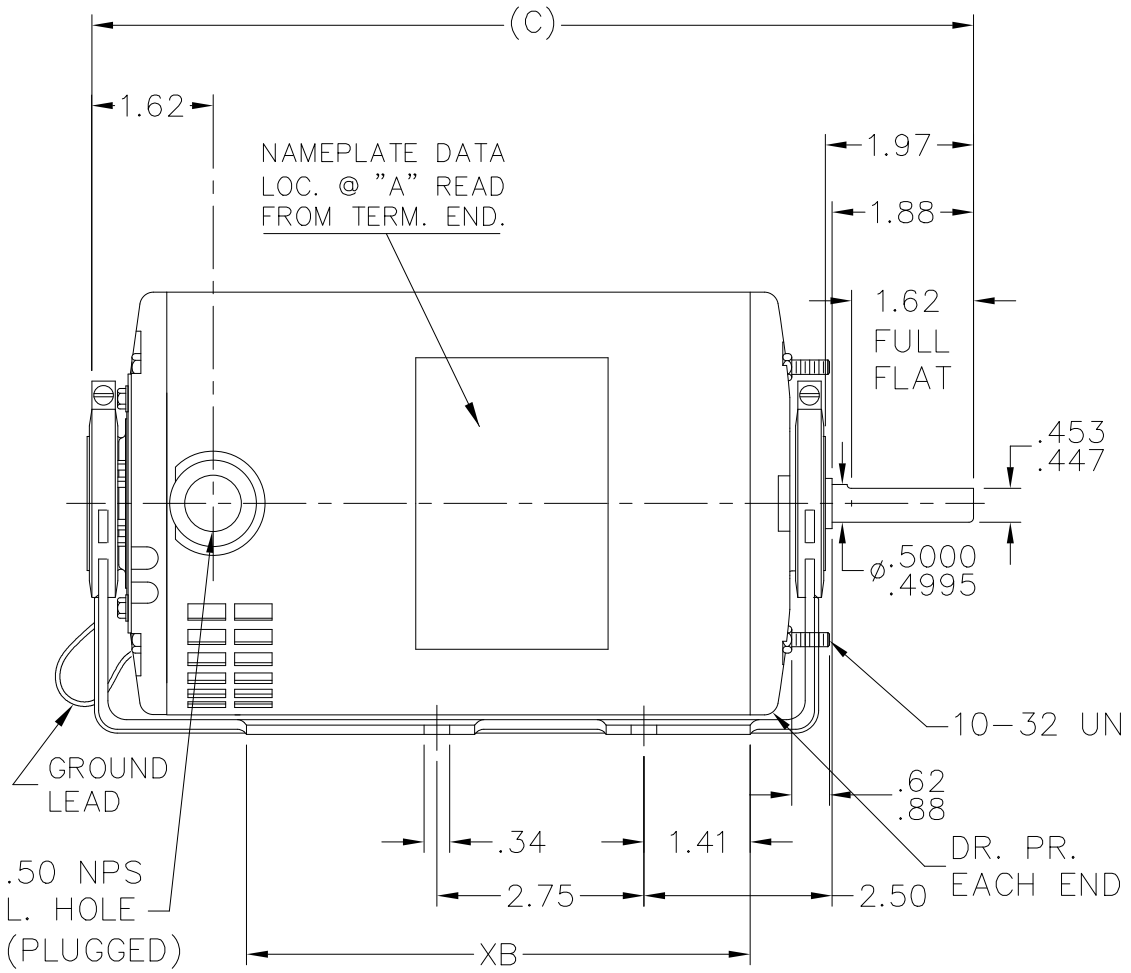
Nameplate Specifications

Phase	1	Output HP	0.25 Hp
Output KW	0.19 kW	Voltage	277 V
Speed	1725 rpm	Service Factor	1.35
Frame	48Z	Enclosure	Drip Proof
Thermal Protection	No Protection	Efficiency	59.5 %
Ambient Temperature	40 °C	Frequency	60 Hz
Current	2.1 A	Power Factor	53.5
Duty	Continuous	Insulation Class	B
Design Code	NO DESIGN CODE	KVA Code	P
Drive End Bearing Size	6203	Opp Drive End Bearing Size	6203
UL	Recognized	CSA	Y
CE	N	IP Code	22
Number of Speeds	1		

Technical Specifications

Electrical Type	Split Phase	Starting Method	Across The Line
Poles	4	Rotation	Selective Counterclockwise
Resistance Main	0 Ohms	Mounting	Resilient Base - Extended Studs
Motor Orientation	Horizontal	Drive End Bearing	Ball
Opp Drive End Bearing	Ball	Frame Material	Rolled Steel
Shaft Type	Single Special Extension	Overall Length	9.47 in
Frame Length	5.50 in	Shaft Diameter	0.500 in
Shaft Extension	1.97 in	Assembly/Box Mounting	F1 ONLY
Outline Drawing	A-SS75570-550	Connection Drawing	A-EE7195AS

This is an uncontrolled document once printed or downloaded and is subject to change without notice. Date Created:08/23/2024



TERM. END

DASH	FRAME	XB	C	DASH	FRAME	XB	C
550	48	5.69	9.47	650	48	6.69	10.47
575	48	5.94	9.72				
625	48	6.44	10.22				

NO.	REVISION	BY & DATE	CHK	ANG	TOLERANCES UNLESS SPECIFIED
4	CHG FROM MARATHON TO RRX TEMPLATE PER ECR-0233452	MD 5/2/24	DS	.X	DEC. INCHES
3	UPDATED DRAWING	TJW 04/20/2007		.XX	±.03
2	REDRAWN IN AUTOCAD	TAT 08-03-2004	ML	.XXX	±.005
1	NEW DRAWING	3917460 RM 05-28-1992		.XXXX	±.0005
					±'7'30"

TOLERANCES UNLESS SPECIFIED

Regal Rexnord Regal Beloit America, Inc.

TITLE OUTLINE

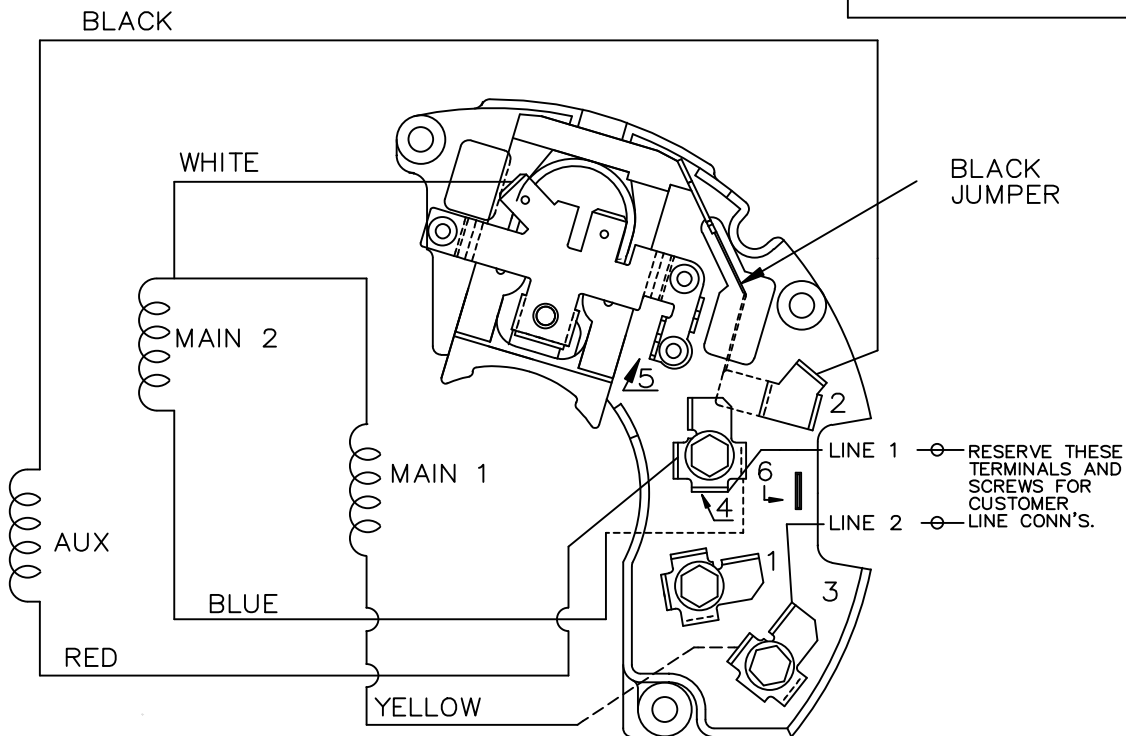
MAT'L.

FINISH

DRAWN	RM 05-26-1992
CHK	ML 05-26-1992
APPD	GK 05-26-1992
SCALE	3=8
REF	
FMF	
PREV	

THIS DRAWING IN DESIGN AND DETAIL IS OUR PROPERTY AND MUST NOT BE USED EXCEPT IN CONNECTION WITH OUR WORK ALL RIGHTS OF DESIGN AND INVENTION ARE RESERVED THIS IS AN ELECTRONICALLY GENERATED DOCUMENT - DO NOT SCALE THIS PRINT

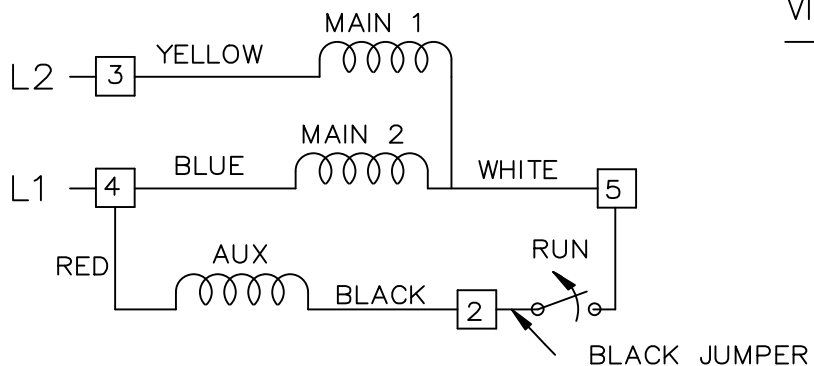
RFP	CAD FILE ss75570	SIZE	DRAWING NO.	PAGE	OF	REV.
DIST WP		A	SS75570	4		4




SINGLE HIGH VOLTAGE CAPACITOR START
 REVERSIBLE ON TERM BOARD
 NO OVERLOAD PROTECTION

VIEWING TERM END

CCW ROTATION SHOWN
 TO REVERSE ROTATION INTERCHANGE
 RED LEAD WITH BLACK LEAD



				TOLERANCES UNLESS SPECIFIED		 REGAL-BELOIT CORPORATION	DRAWN TJW 6/28/2010			
				DEC.	INCHES		CHK CTO 6/28/2010			
				.X	± -		APPD EH 6/28/2010			
				.XX	± -		SCALE			
				.XXX	± -		REF			
				.XXXX	± -	MAT'L.	FMF ISAAC10-2159			
NO.	REVISION	BY & DATE	CHK	ANG	± -	FINISH	PREV			
THIS DRAWING IN DESIGN AND DETAIL IS OUR PROPERTY AND MUST NOT BE USED EXCEPT IN CONNECTION WITH OUR WORK ALL RIGHTS OF DESIGN AND INVENTION ARE RESERVED THIS IS AN ELECTRONICALLY GENERATED DOCUMENT - DO NOT SCALE THIS PRINT			RFP	6/28/2010	CAD FILE	EE7195AS	SIZE A	DRAWING NO. EE7195AS	PAGE OF	REV.
			DIST							

** Subject to change without notice.



MARATHON ELECTRIC CORPORATION
TYPICAL PERFORMANCE CURVE for AC MOTOR

Customer

Curve at

277

Volts

HP 0.25

PHASE 1

Model No 48S17D2116

60

HZ

VOLTS 277

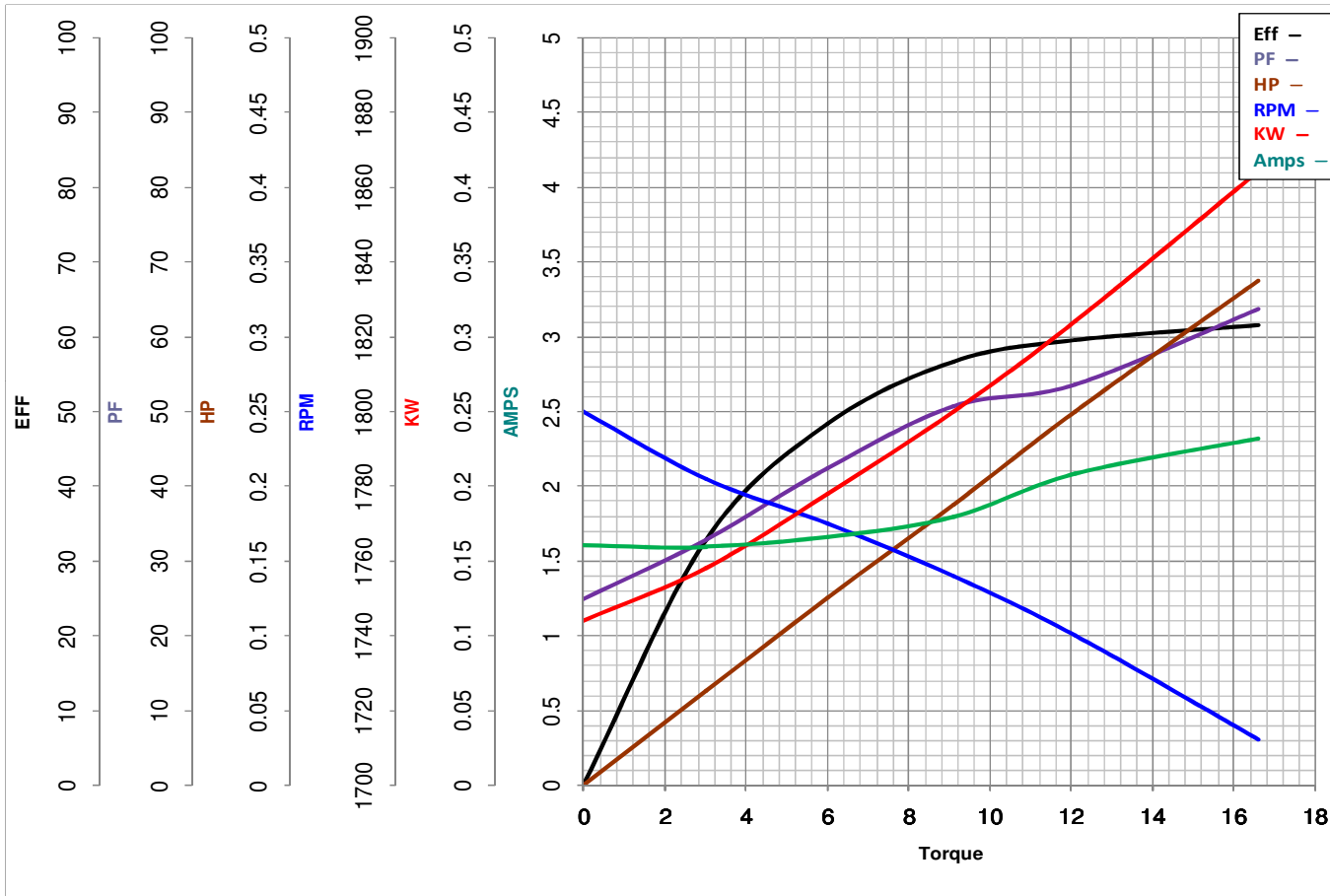
Catalog No B606

0.25

HP

HZ 60

RPM 1725



Torque in Oz.Ft

FL TORQUE 12.1 Oz.Ft
BD TORQUE 27.5 Oz.Ft
LR TORQUE 17.3 Oz.Ft

FL AMPS 2.1
PU TORQUE 16.7 Oz.Ft
LR AMPS 10.96

WINDING SE48459-5

Date 1/7/2019